

LAND FOR SALE

139.035 Acres

cresa



Property Features

- Contiguous Parcels
- Situated in Unincorporated Douglas County
- Flat Topography
- In Path of Progress Between Town of Parker and City of Castle Pines
- Will Sell with Water Rights
- Direct Access to Crowfoot Valley Road

OFFERED BY

Mike Statter, SIOR, CCIM
Principal

M | 314.330.5240
mstatter@cresa.com

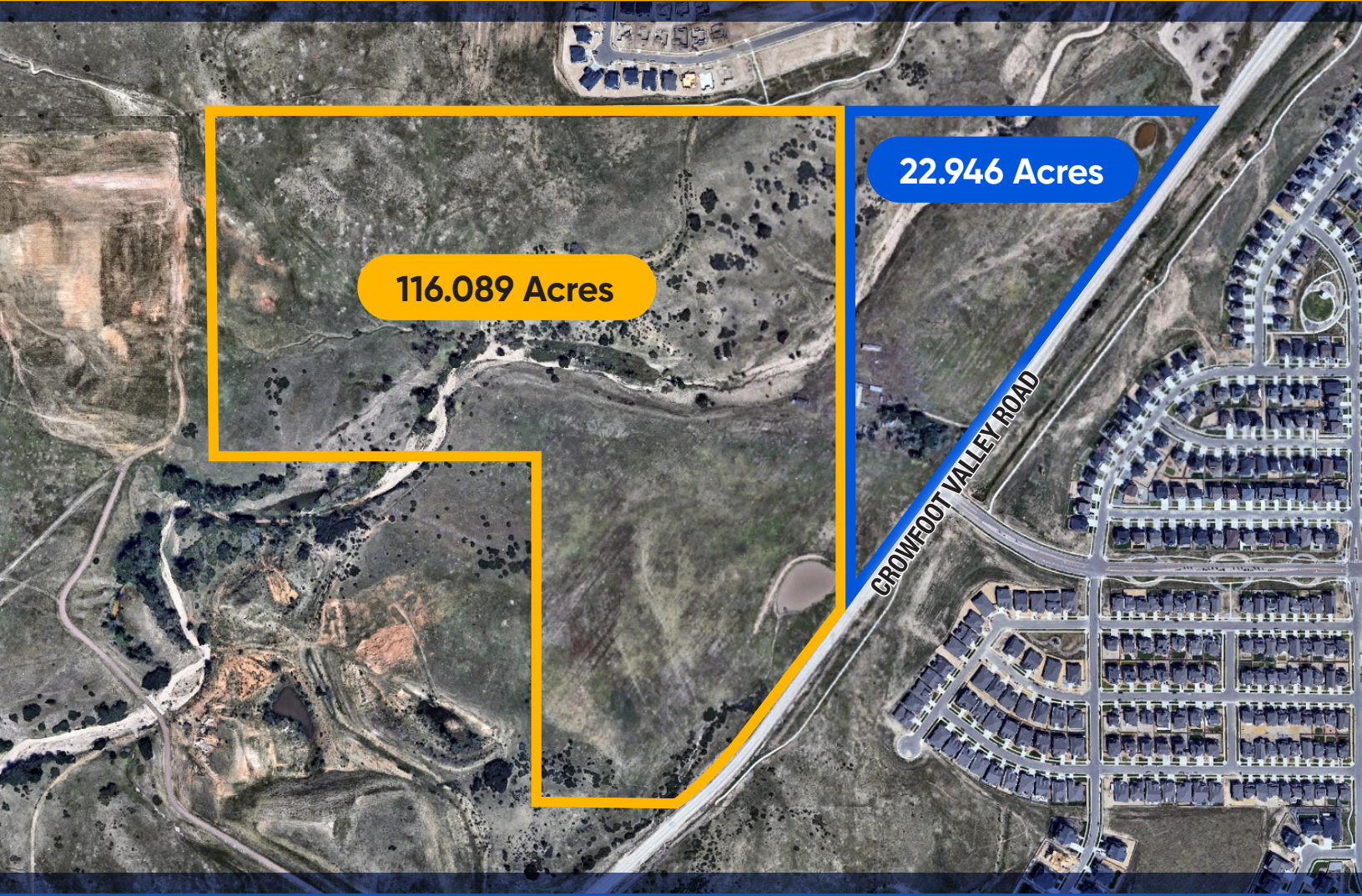
Chris W. Smith
Senior Vice President

M | 713.503.4428
csmith@cresa.com

LAND FOR SALE

139.035 Acres

cresa



Two Parcels in Douglas County

Parcel #1

- State Parcel #2349-080-00-031
- 116.089 Acres
- Zoned Agricultural
- Asking Price: \$40,000 / Acre

Parcel #2

- 6645 Crowfoot Valley Road
- State Parcel #2349-090-00-010
- 22.946 Acres
- Zoned Residential
- Asking Price: \$50,000 / Acre

OFFERED BY

Mike Statter, SIOR, CCIM
Principal

M | 314.330.5240
mstatter@cresa.com

Chris W. Smith
Senior Vice President

M | 713.503.4428
csmith@cresa.com