

# 20 JAY STREET

DUMBO, BROOKLYN, NY

**SUBLEASE  
AVAILABLE  
IMMEDIATELY**

## Space Profile

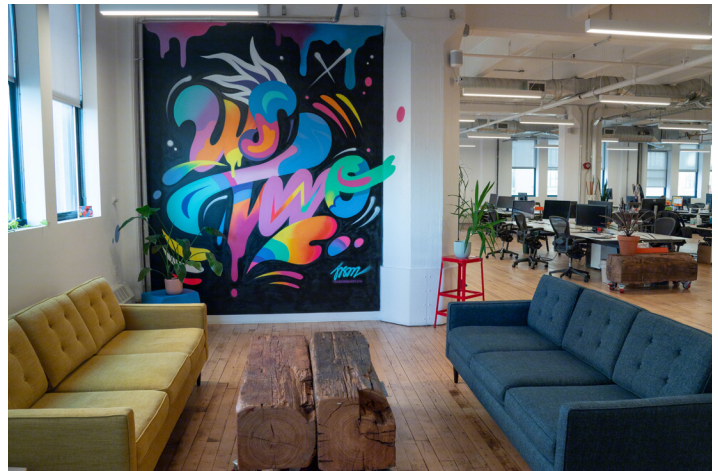
<b>Premises</b>	Partial 5th Floor
<b>Size (SF)</b>	11,427 SF
<b>Estimated Capacity</b>	76 people
<b>Possession</b>	Immediate
<b>Rental Rate</b>	Upon Request
<b>Term</b>	April 30, 2027

## Space Notes

- 24/7 access
- Loading dock
- Pets allowed
- Bike storage
- Parking
- Communal roof access
- Parking garage



**Virtual Tour**



## Contact

**Bert Rosenblatt**  
**Managing Principal**  
917.862.8820 - Mobile  
brosenblatt@cresa.com

Even though obtained from sources deemed reliable, no warranty or representation, express or implied, is made as to the accuracy of the information herein, and it is subject to errors, omissions, change of price, rental or other conditions, withdrawal without notice, and to any special listing conditions imposed by our principals.

1133 Avenue of the Americas, Ste 2900 | New York, NY 10036

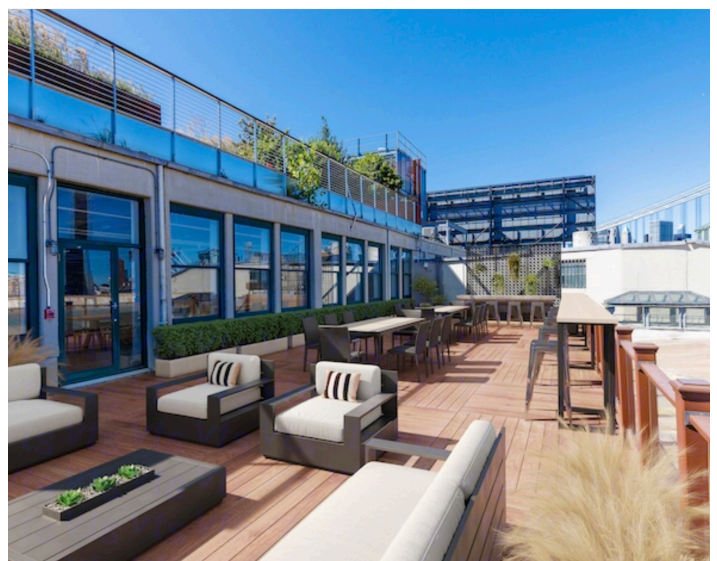
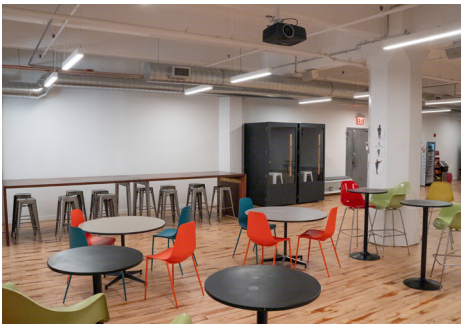
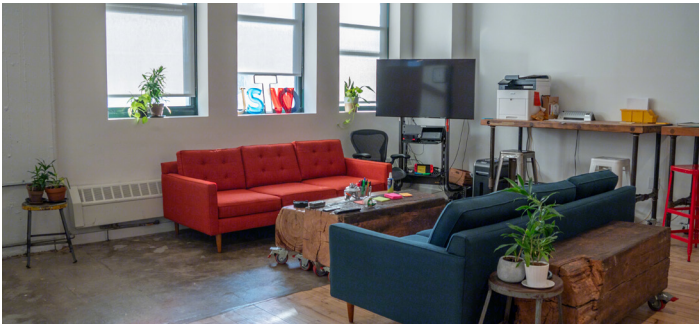
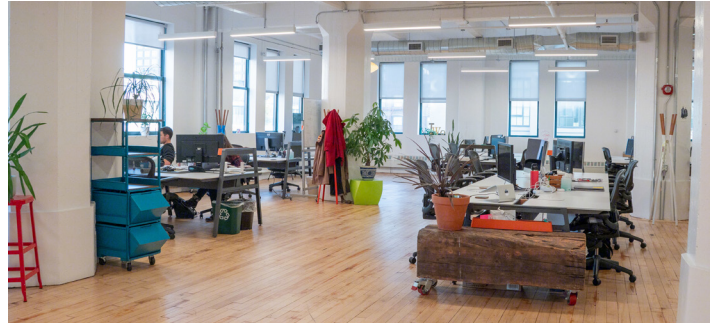
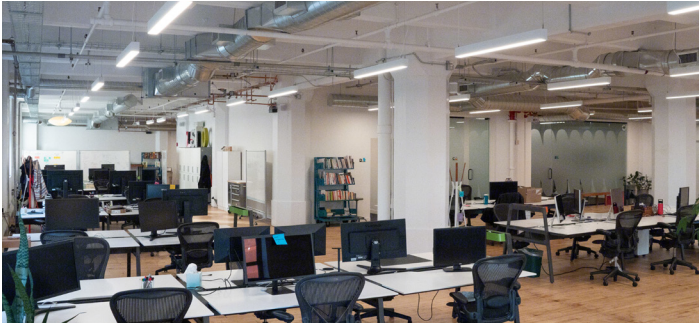
**cresa**



# 20 JAY STREET

DUMBO, BROOKLYN, NY

**SUBLEASE  
AVAILABLE  
IMMEDIATELY**



## Contact

**Bert Rosenblatt**  
**Managing Principal**  
917.862.8820 - Mobile  
[brosenblatt@cresa.com](mailto:brosenblatt@cresa.com)

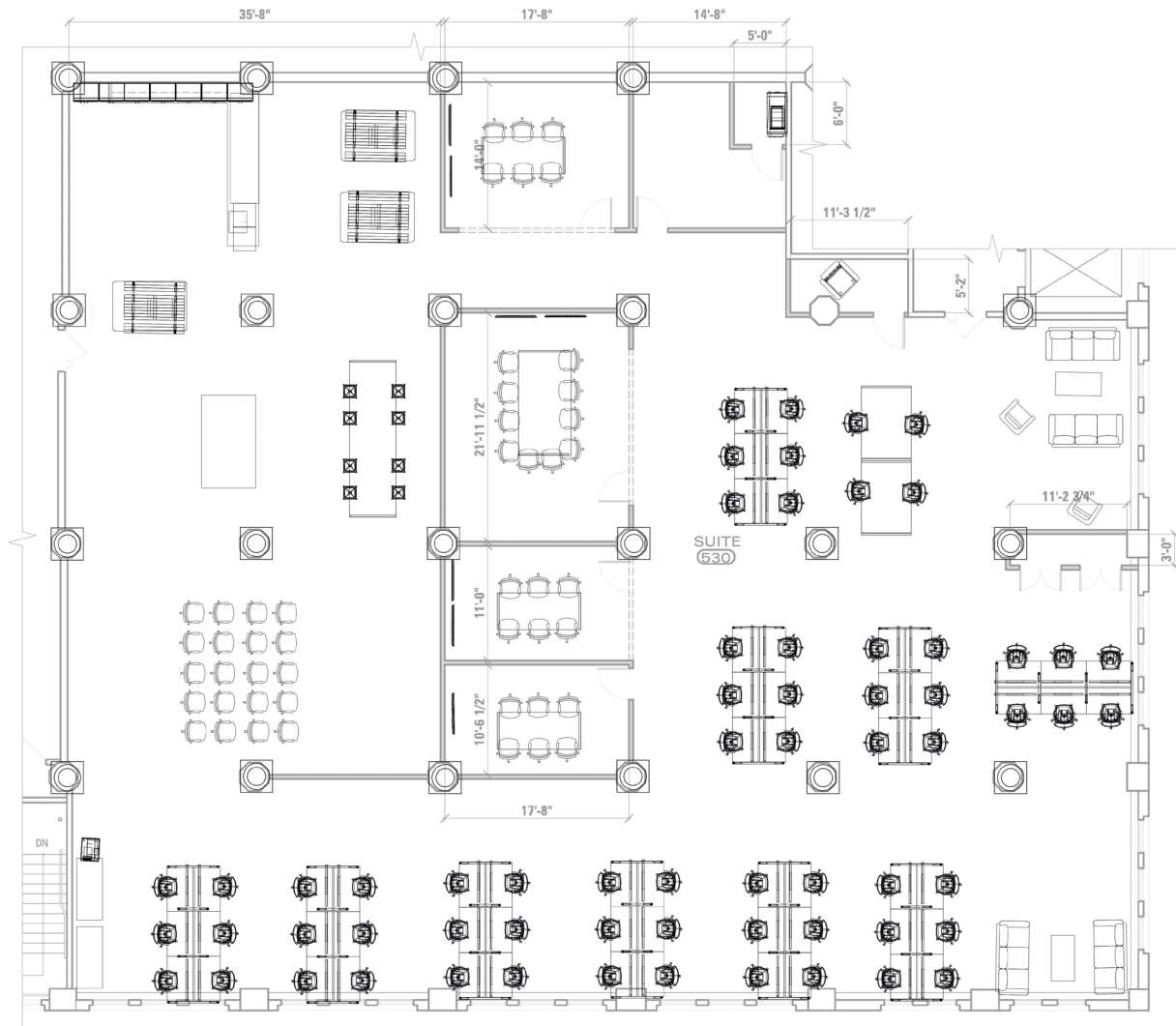
Even though obtained from sources deemed reliable, no warranty or representation, express or implied, is made as to the accuracy of the information herein, and it is subject to errors, omissions, change of price, rental or other conditions, withdrawal without notice, and to any special listing conditions imposed by our principals.

1133 Avenue of the Americas, Ste 2900 | New York, NY 10036

**cresa** ::

## DUMBO, BROOKLYN, NY

**SUBLEASE  
AVAILABLE  
IMMEDIATELY**



**Bert Rosenblatt**  
**Managing Principal**  
 917.862.8820 - Mobile  
 brosenblatt@cresa.com

1133 Avenue of the Americas, Ste 2900 | New York, NY 10036

