



# For Lease

## BOUTIQUE OFFICE SPACE

669 Howe St, Vancouver, BC

Available:  
**Immediately**

Basic Rent:  
**contact listing team**

Additional Rent:  
**\$28.40 psfpa**  
**(2025 est.)**

Parking:  
**1:3,000 SF,**  
**\$200/month + taxes**

669 Howe is boutique office space located in the heart of Vancouver's central business district, just steps from the Provincial Law Courts, major banks, the city's top hotels, restaurants and amenities.

**cresa**



elevator  
exposure



concierge  
service



secure  
parking



onsite  
management



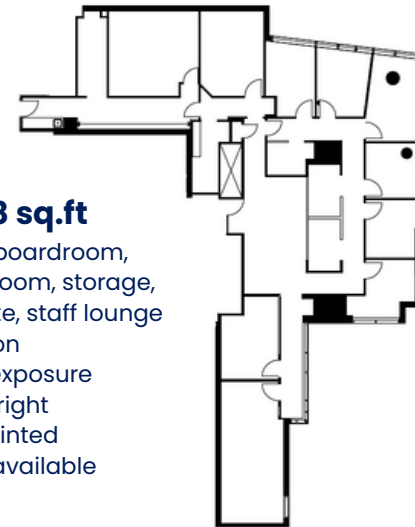
central  
location



End of Trip  
Facilities

FOR LEASE | **cresa**

## SUITE 560:



**Size: 3,018 sq.ft**

- 7 offices, boardroom, meeting room, storage, kitchenette, staff lounge & reception
- elevator exposure
- clean & bright
- freshly painted
- furniture available

